



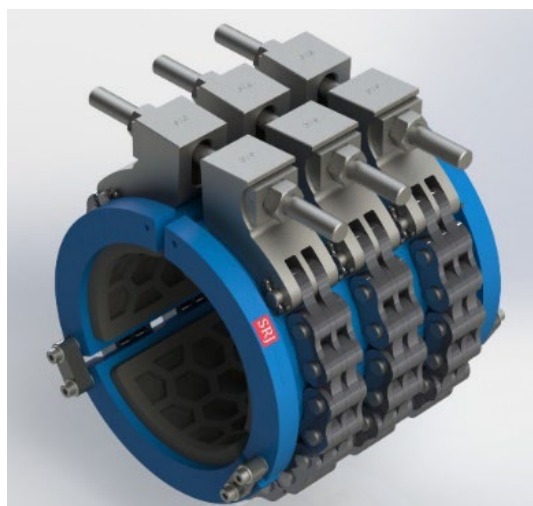
SRJ Multi-Shell Repair Clamp - Technical Datasheet

Intended use:

The SRJ Multi-Shell Repair Clamp (MSRC) is intended as an emergency or temporary repair solution for damaged or leaking pipework.

It is designed to encapsulate localised through-wall defects, or to reinforce sections of weakened, dented or damaged pipe, – restoring pipe integrity until a permanent repair can be planned and implemented.

The MSRC should not be used to join pipe and does not provide axial pipe restraint. The use of a SRJ Coupling is recommended for pipe joining applications.



Product features:

- Unique hex pattern seal design provides multiple pressure boundaries, maximising effective sealing pressure.
- Available in different lengths and with various seal elastomer materials to suit a range of repair scenarios.
- Segmented, hinged housing provides increased tolerance for pipe ovality and allows for easy installation without disruption to piping system operation or the need for specialist tooling.
- Robust construction and protectively coated components provide durability in a range of hostile environments.
- Engineered to be refurbished and reusable.

Technical specifications:

- Size range: nominal pipe diameters from 3" to 12" (80 mm to 300 mm)
- Operating temperature range^{[1][2]}:
 - -25 °C to +210 °C
- Maximum operating pressure^[3]:
 - 3" to 6" inclusive – up to 50 barg
 - 8" to 12" inclusive – up to 30 barg
- Storage temperature range: -20 °C to +70 °C
- Dimensions and weight: refer to product line datasheet

Notes:

[1] Quoted operating temperature range is for standard seal material (Viton); temperature limitations for other material options are available on request.

[2] Lower and higher temperatures can be tolerated for short working periods.

[3] For maximum hole size of diameter 15mm.



Multi-Shell Repair Clamp (MSRC) Product Line Datasheet

MSRC Type	Clamp Length (mm)	No. of Chains	Pressure Rating (barg)	Weight (kg)
3" Standard	354	5	58.5	13
3" Short	165	3	58.5	8
4" Standard	354	5	58.5	16
4" Short	179	3	58.5	9
6" Standard	450	6	58.5	36
6" Short	230	3	58.5	19
8" Standard	550	6	40	48
8" Short	230	3	40	24
10" Standard	658	6	40	82
10" Short	260	3	40	39
12" Standard	769	9	40	129
12" Short	260	3	40	47

Pressure ratings based upon test results.